



FATALITY ANALYSIS OF NATIVE HAWAIIANS IN THE STATE OF HAWAII, 2007-2016



Kishor Bhatta

Dr. Panos D. Prevedouros

**Department of Civil and Environmental Engineering
University of Hawaii at Manoa**

PRESENTATION OUTLINE

- 1. INTRODUCTION**
- 2. FATALITY ANALYSIS BASED ON ALCOHOL USE**
- 3. FATALITY ANALYSIS BASED ON SPEEDING**
- 4. FATALITY ANALYSIS BASED ON NON-USAGE OF RESTRAINT**
- 5. MAJOR FINDINGS**
- 6. RECOMMENDATIONS**

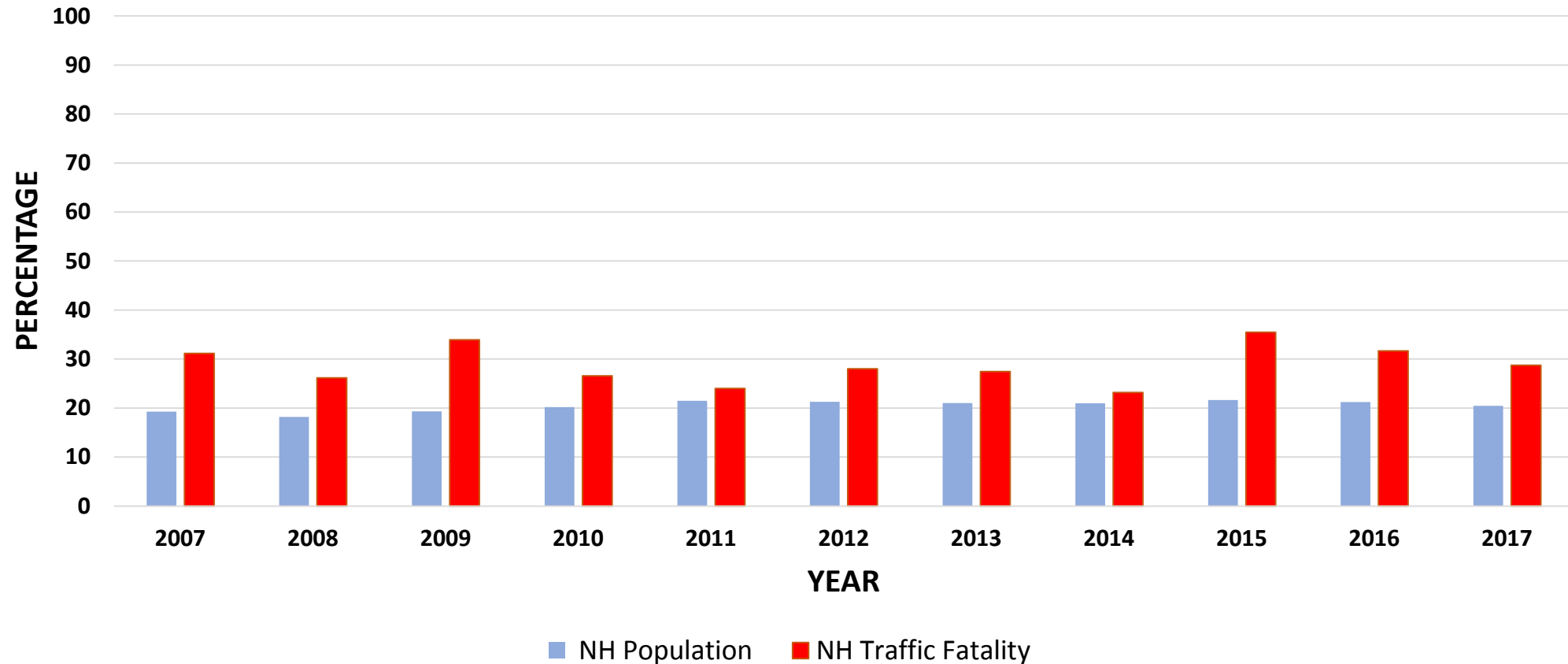
INTRODUCTION

POPULATION AND VMT DATA, HAWAII

Year	Total Population	NH Population	VMT (Million)
2007	1,315,675	253,283	10,260
2008	1,332,213	242,423	10,189
2009	1,346,717	259,866	10,095
2010	1,363,950	275,721	10,111
2011	1,378,251	296,383	10,654
2012	1,392,766	296,592	11,518
2013	1,419,561	298,385	12,078
2014	1,408,987	295,409	10,173
2015	1,431,603	309,904	11,130
2016	1,428,557	302,926	11,132
Change (%)	8.6	19.6	8.5

Source: <http://www.ohadatabook.com/ACS.html>
<https://dashboard.hawaii.gov/stat/goals/5xhf-begg/ezet-axai/f4ic-3axz>

NATIVE HAWAIIAN POPULATION AND NATIVE HAWAIIAN FATALITIES (%)



DATA SOURCE



U.S. Department
of Transportation

**National Highway
Traffic Safety
Administration**

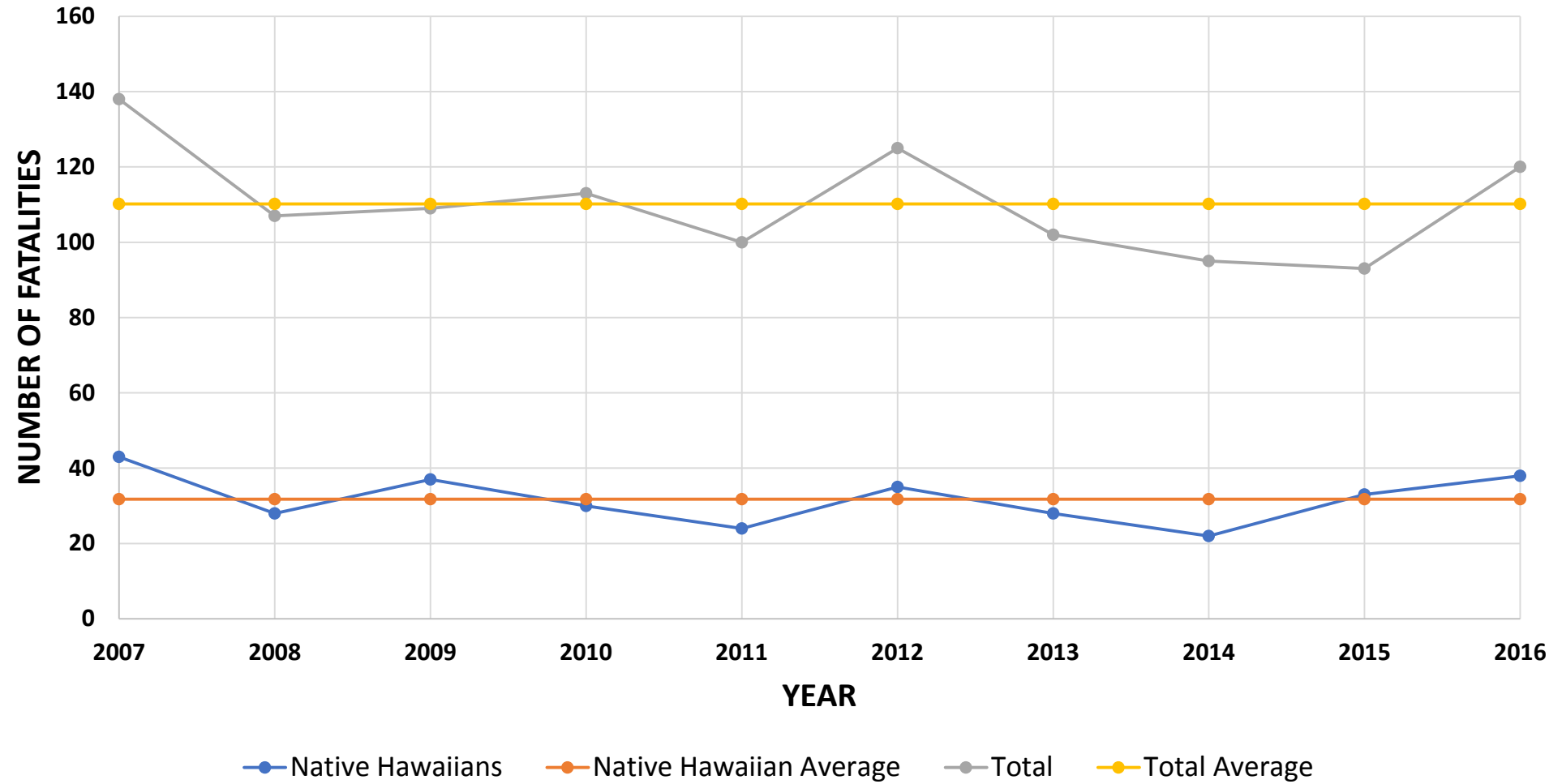


Fatality Analysis Reporting System (FARS)

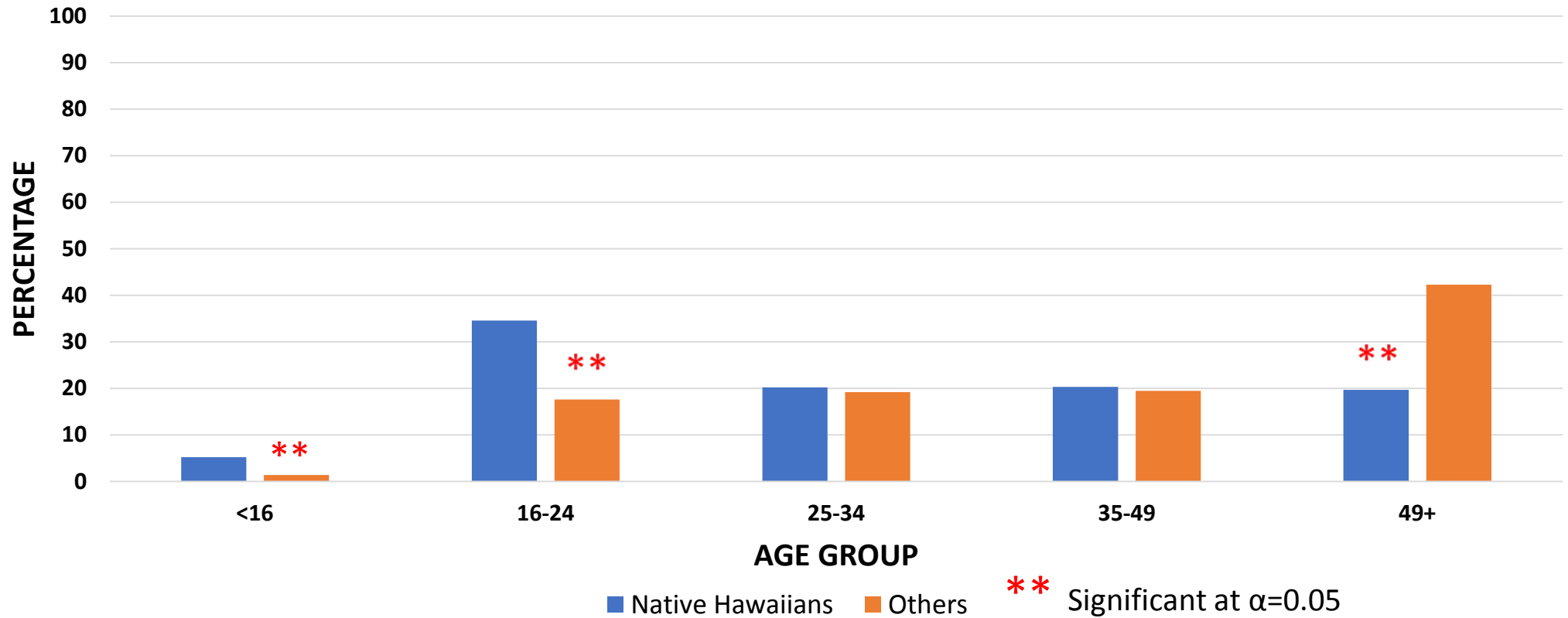
- ✓ FARS is a census of fatal motor vehicle crashes with a set of data files documenting all qualifying fatalities that occurred within the 50 States, the District of Columbia, and Puerto Rico since 1975
- ✓ FARS is directed by the National Center for Statistics and Analysis (NCSA), which is a component of NHTSA
- ✓ FARS data are obtained from various States' documents, such as:
 - Police Crash Reports
 - Death Certificates
 - Coroner/Medical Examiner Reports
 - State Driver Licensing Files
 - State Highway Department Data

TRAFFIC FATALITY ANALYSIS

FATALITIES HAWAII

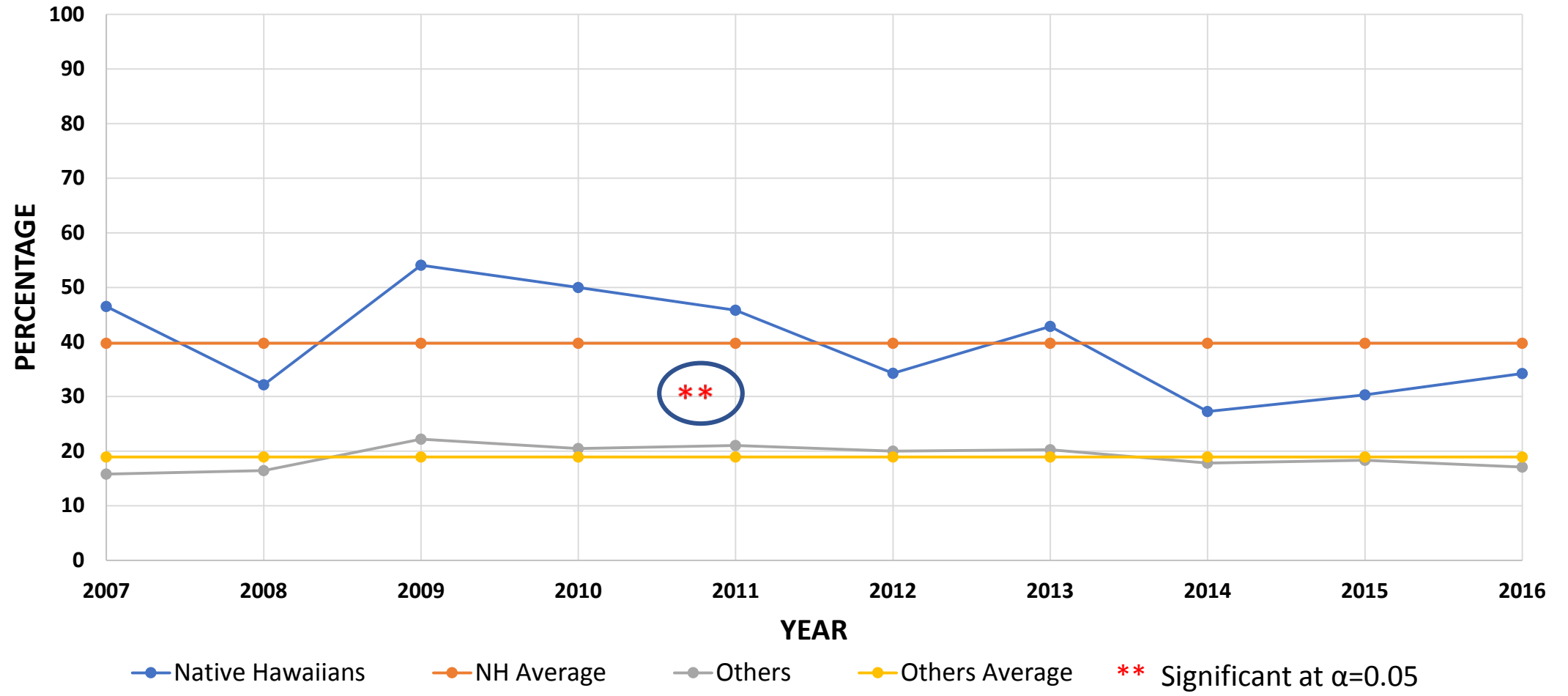


FATALITIES BY AGE GROUP

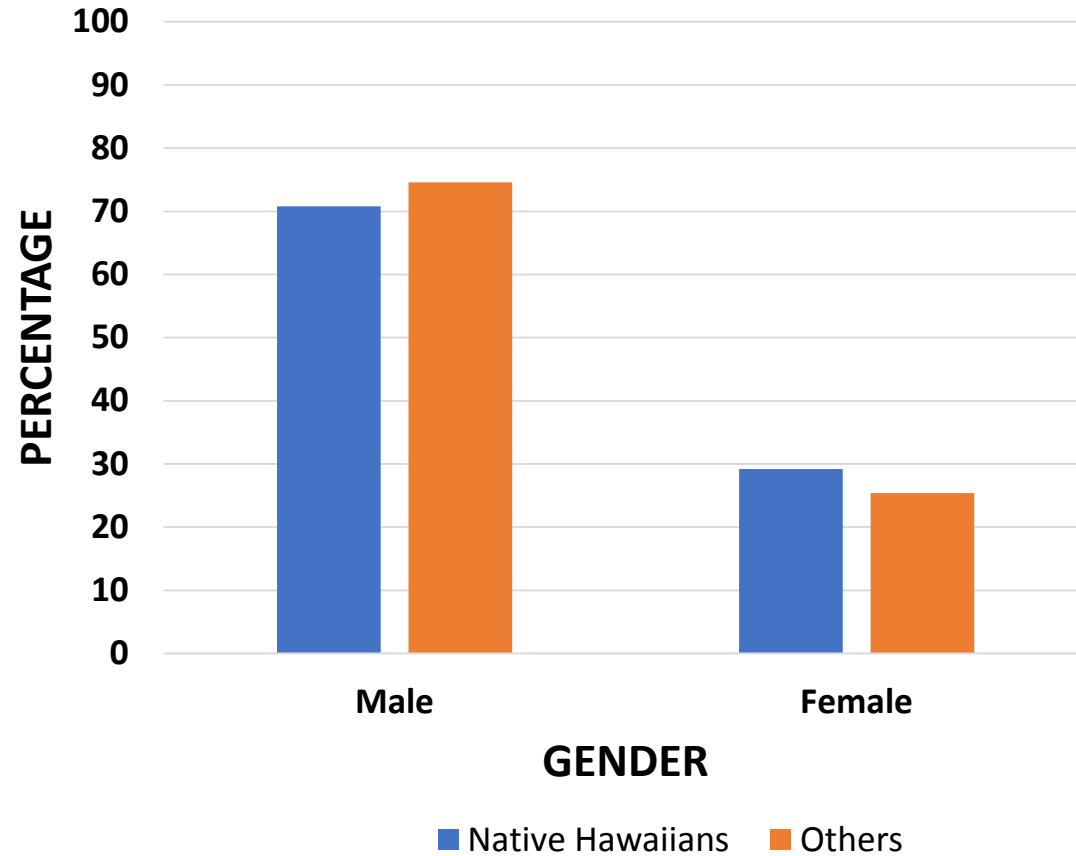


40% of Native Hawaiian fatalities are below the age of **25** whereas its only **19%** among all Others

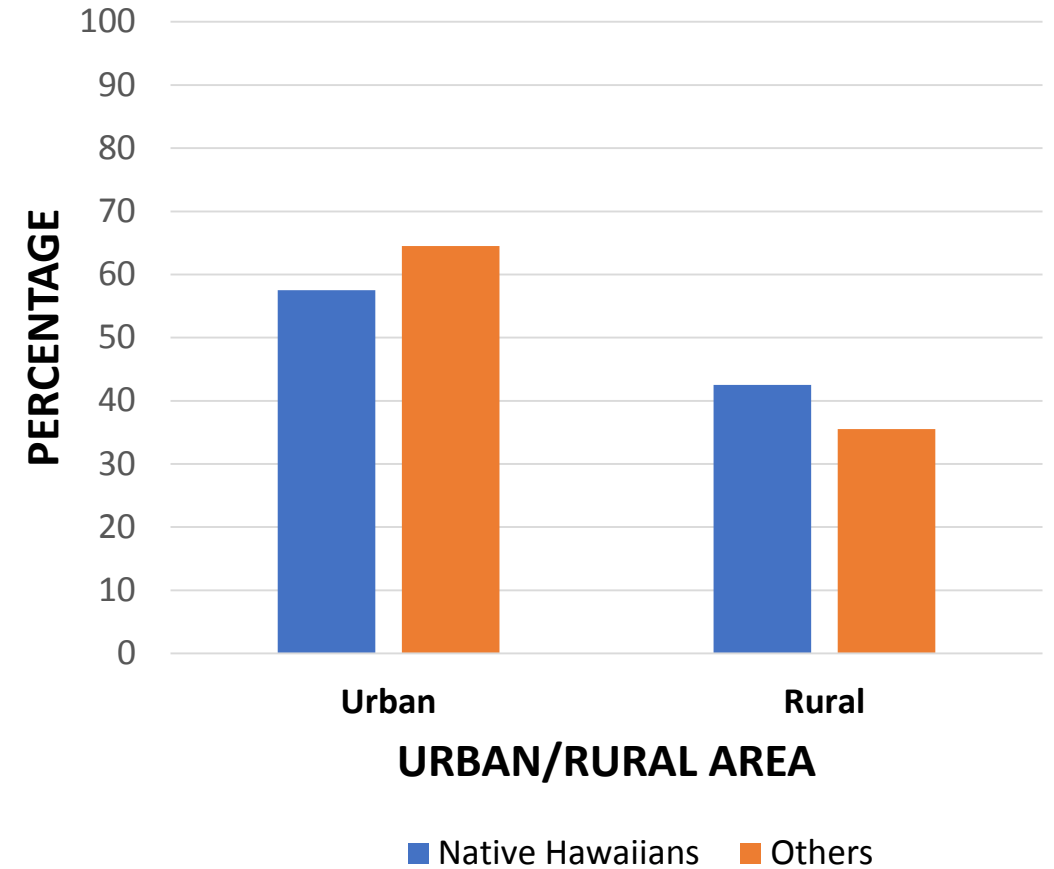
FATALITIES YOUNGER THAN 25 (%)



FATALITIES BY GENDER

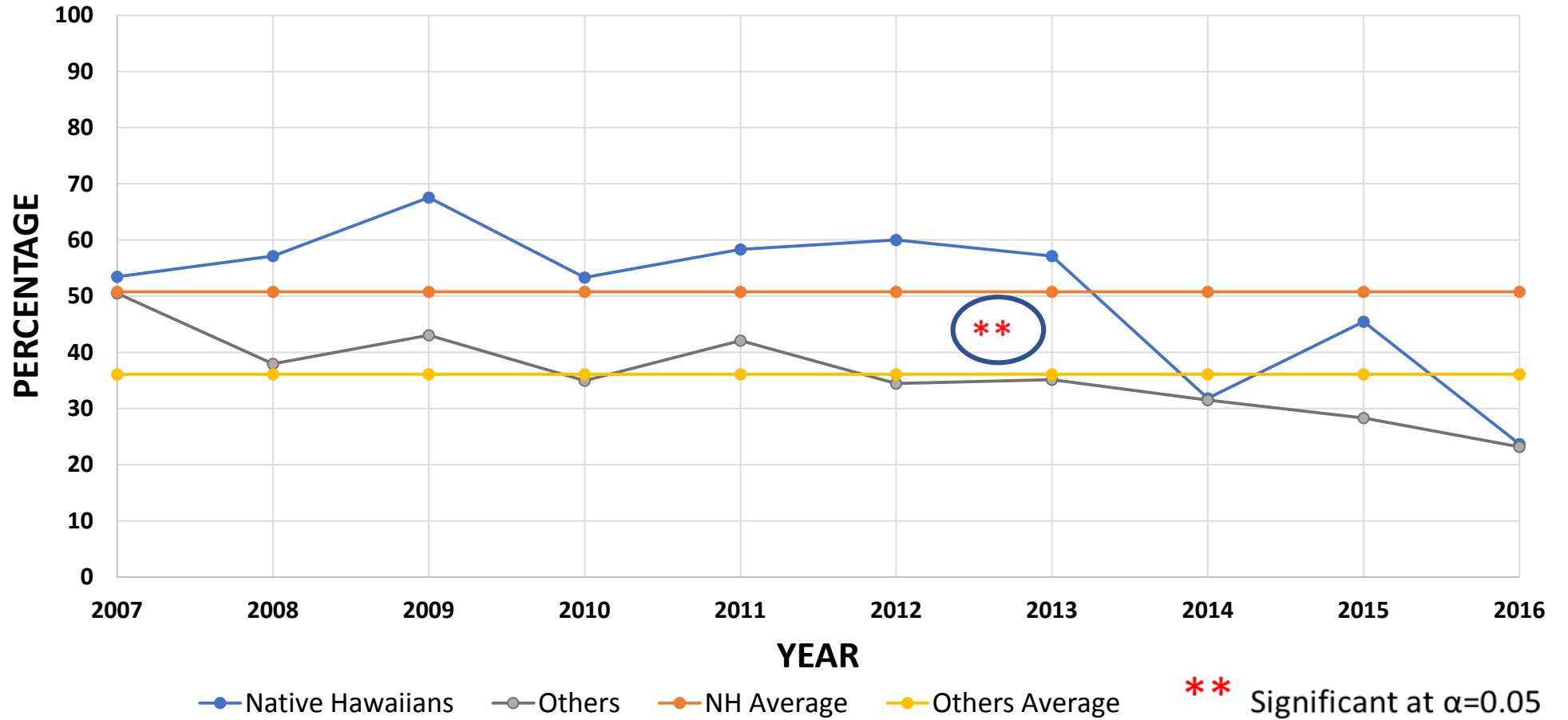


FATALITIES BY URBAN/RURAL AREA

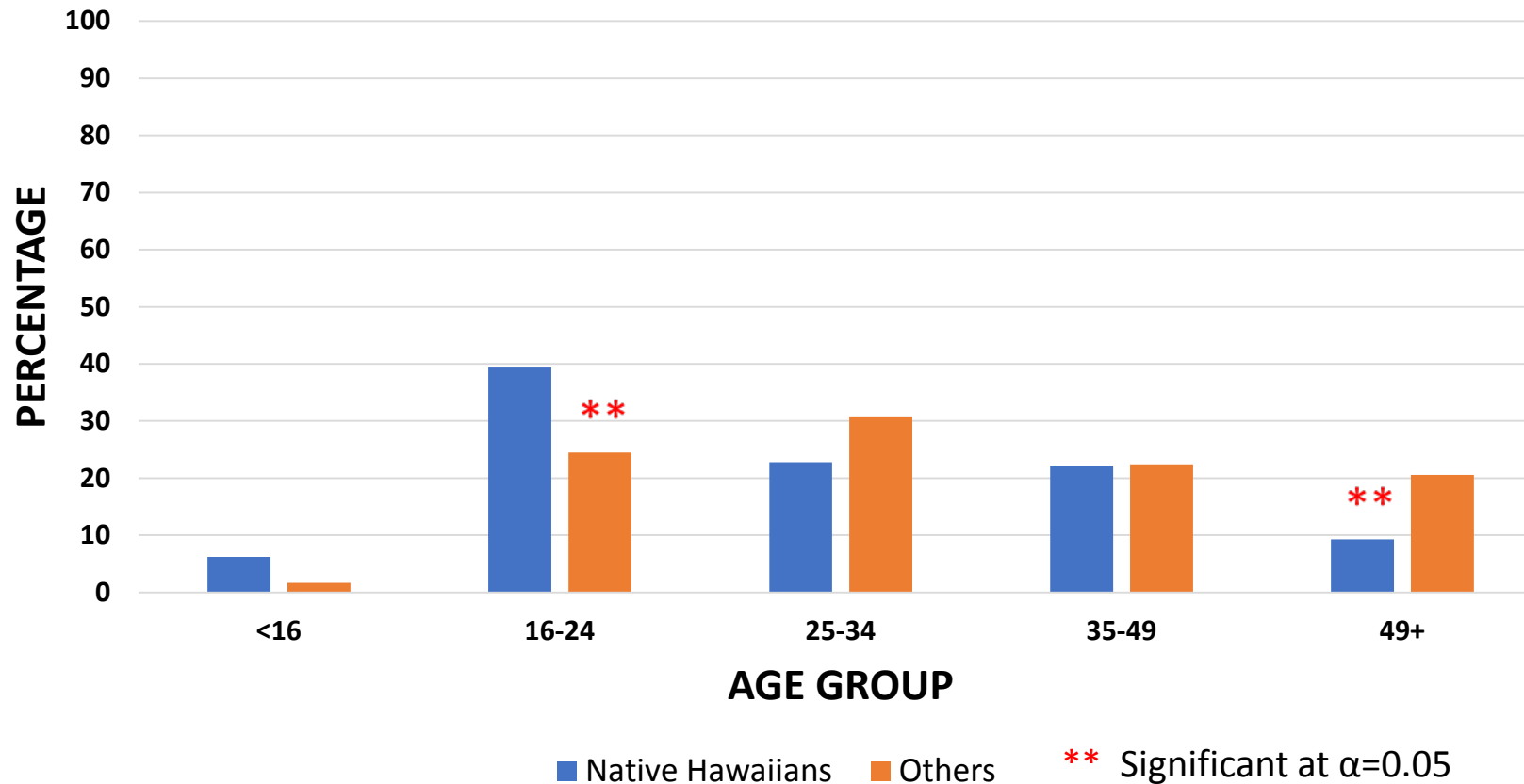


FATALITY ANALYSIS BASED ON ALCOHOL USE

FATALITIES DUE TO ALCOHOL USE (%)

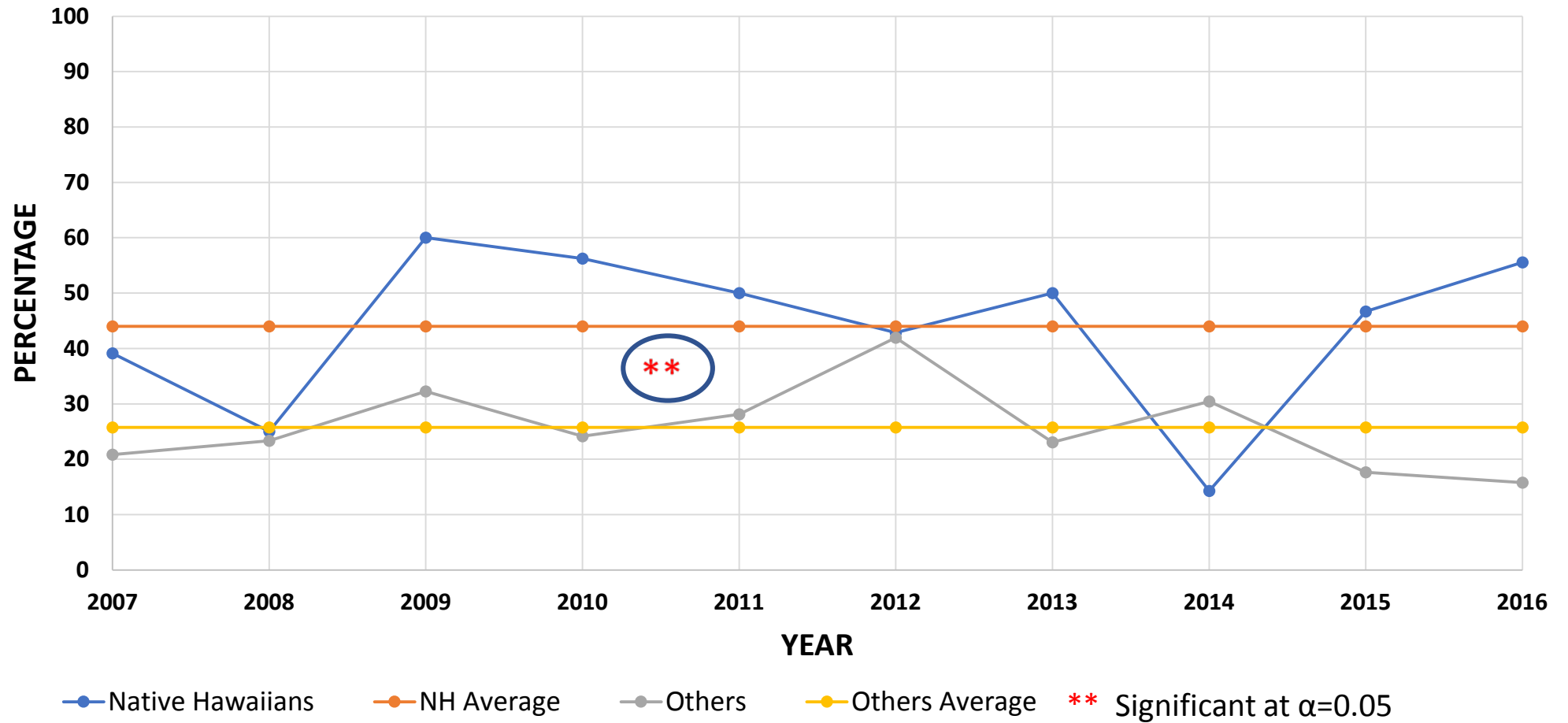


FATALITIES DUE TO ALCOHOL USE BY AGE GROUP (%)

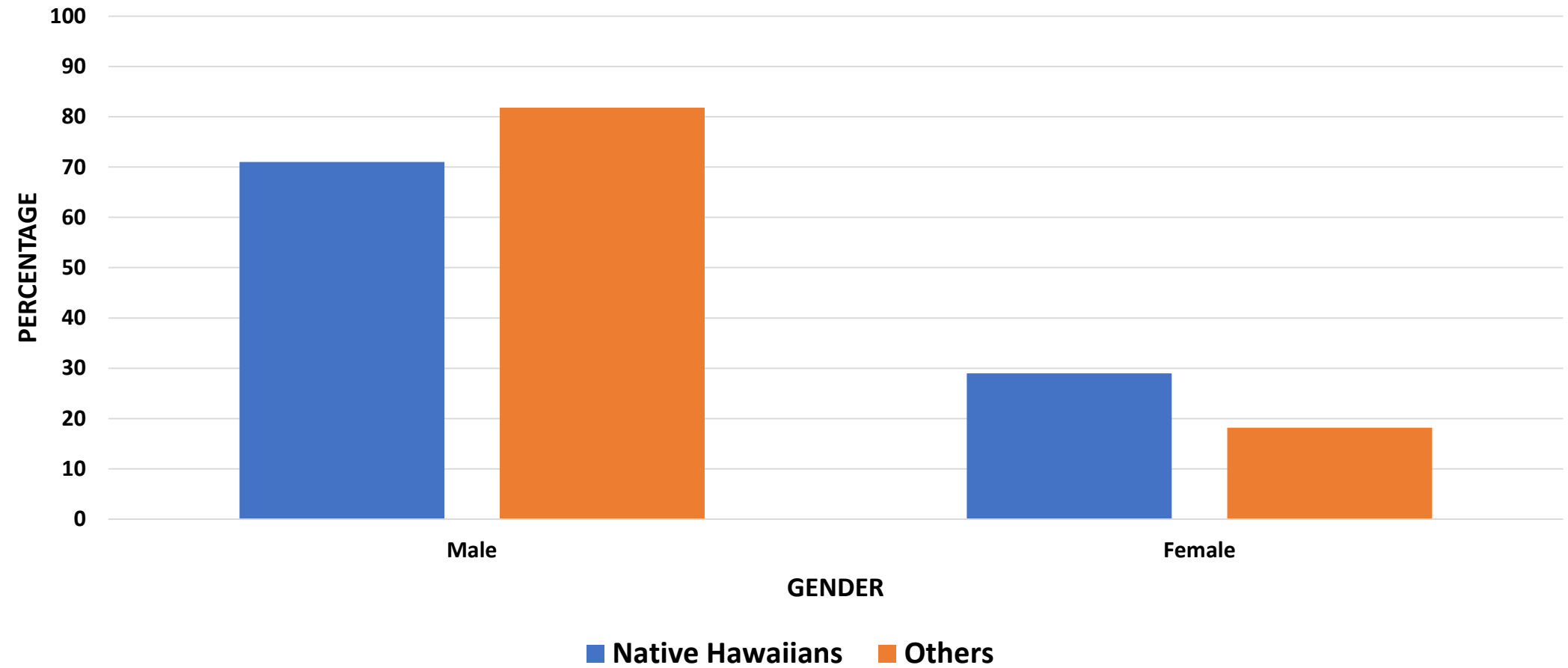


- Among the alcohol impaired fatalities in Hawaii, **46%** NH are younger than **25** whereas in other races its only **26%**.

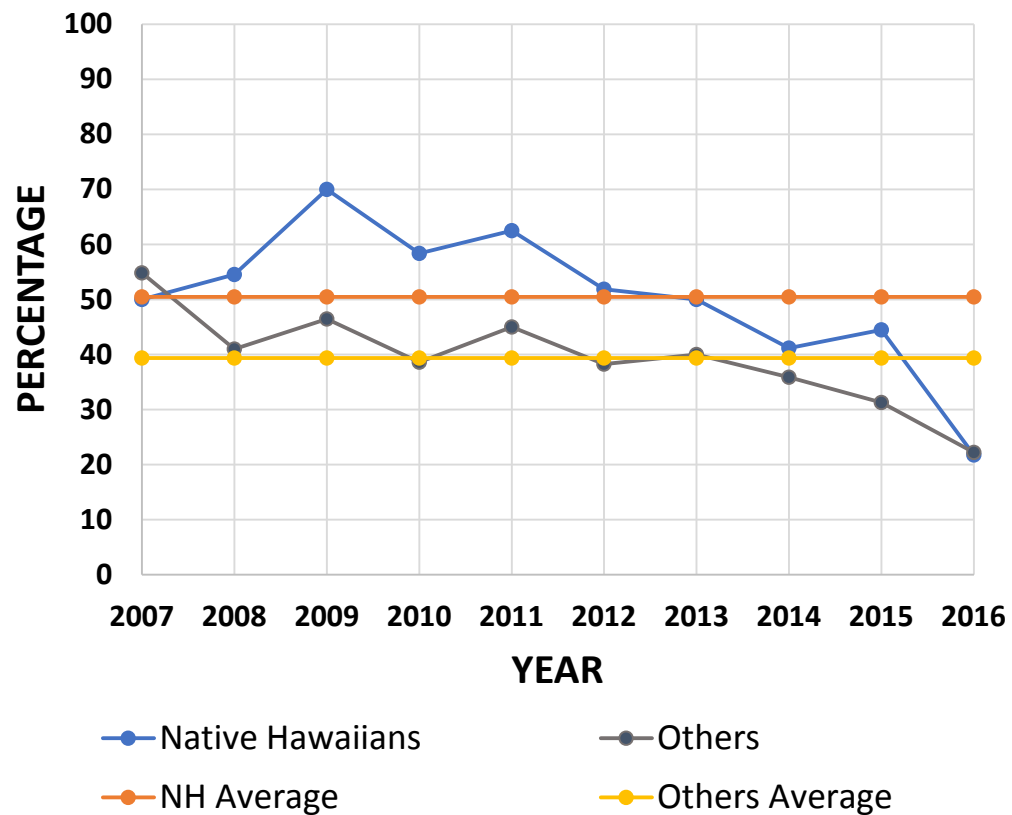
FATALITIES DUE TO ALCOHOL USE YOUNGER THAN 25 YEARS OF AGE (%)



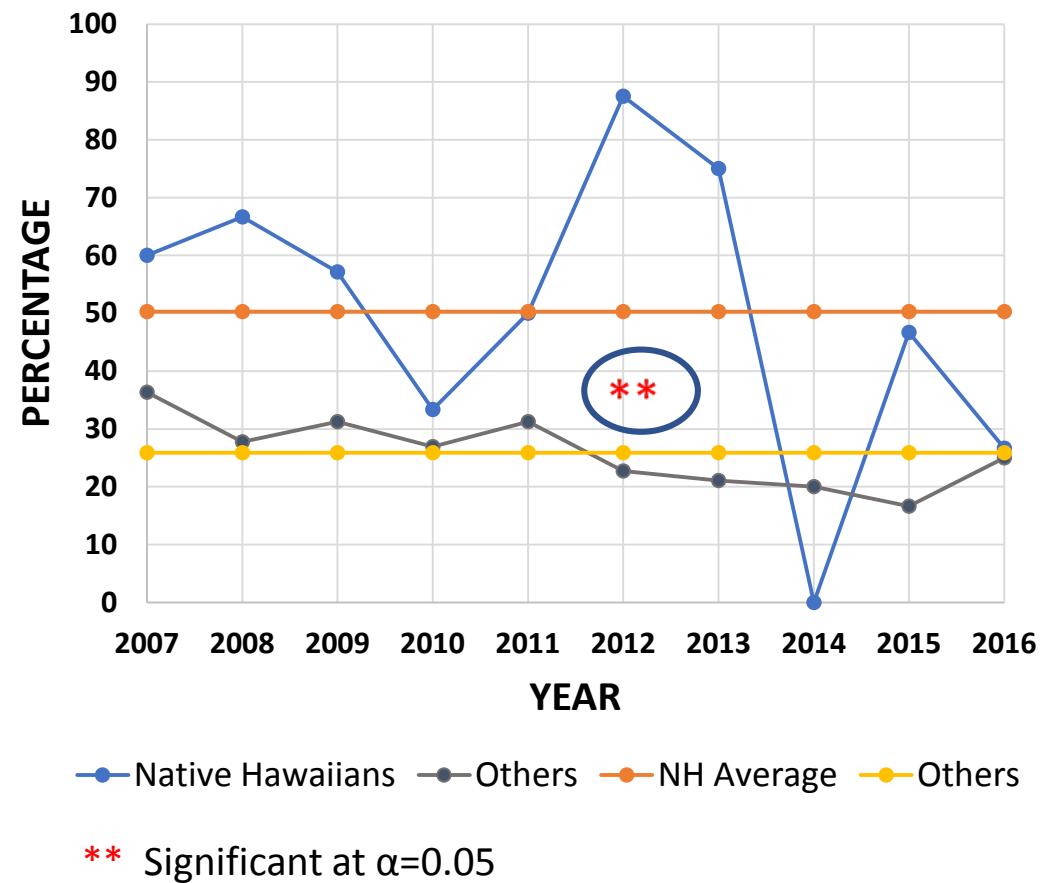
FATALITIES DUE TO ALCOHOL USE BY GENDER (%)



MALE FATALITIES DUE TO ALCOHOL USE (%)

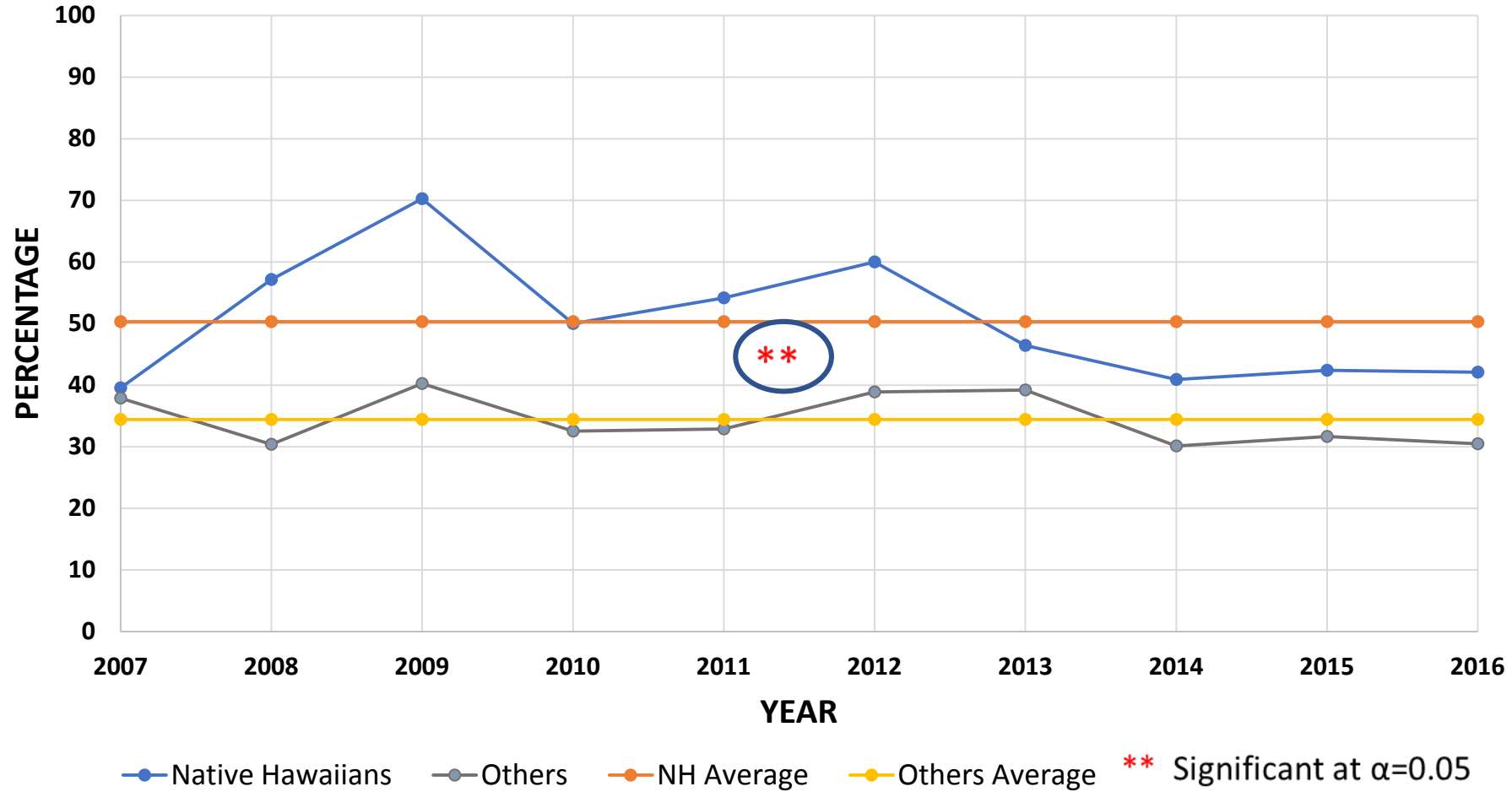


FEMALE FATALITIES DUE TO ALCOHOL USE (%)

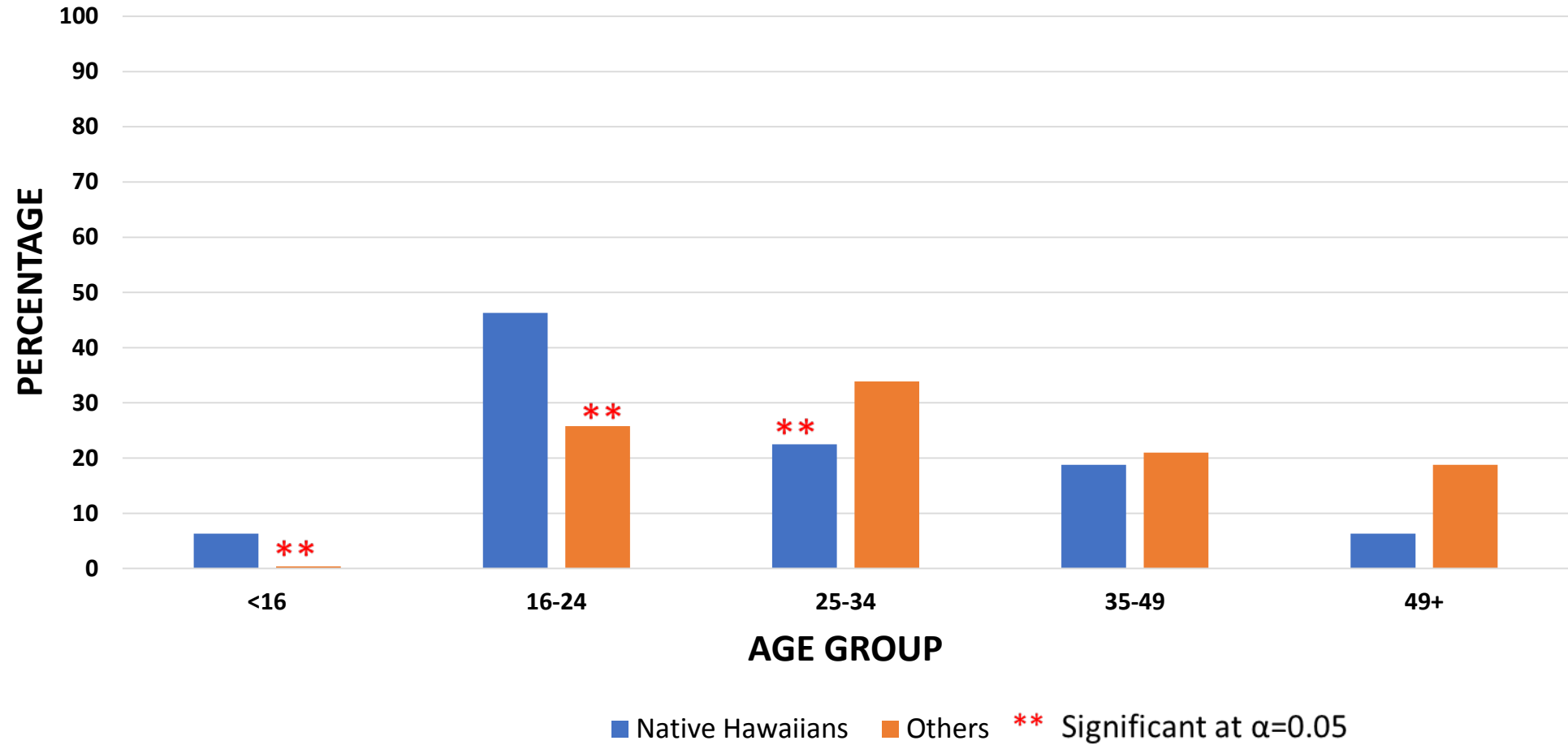


FATALITY ANALYSIS BASED ON SPEEDING

FATALITIES DUE TO SPEEDING (%)

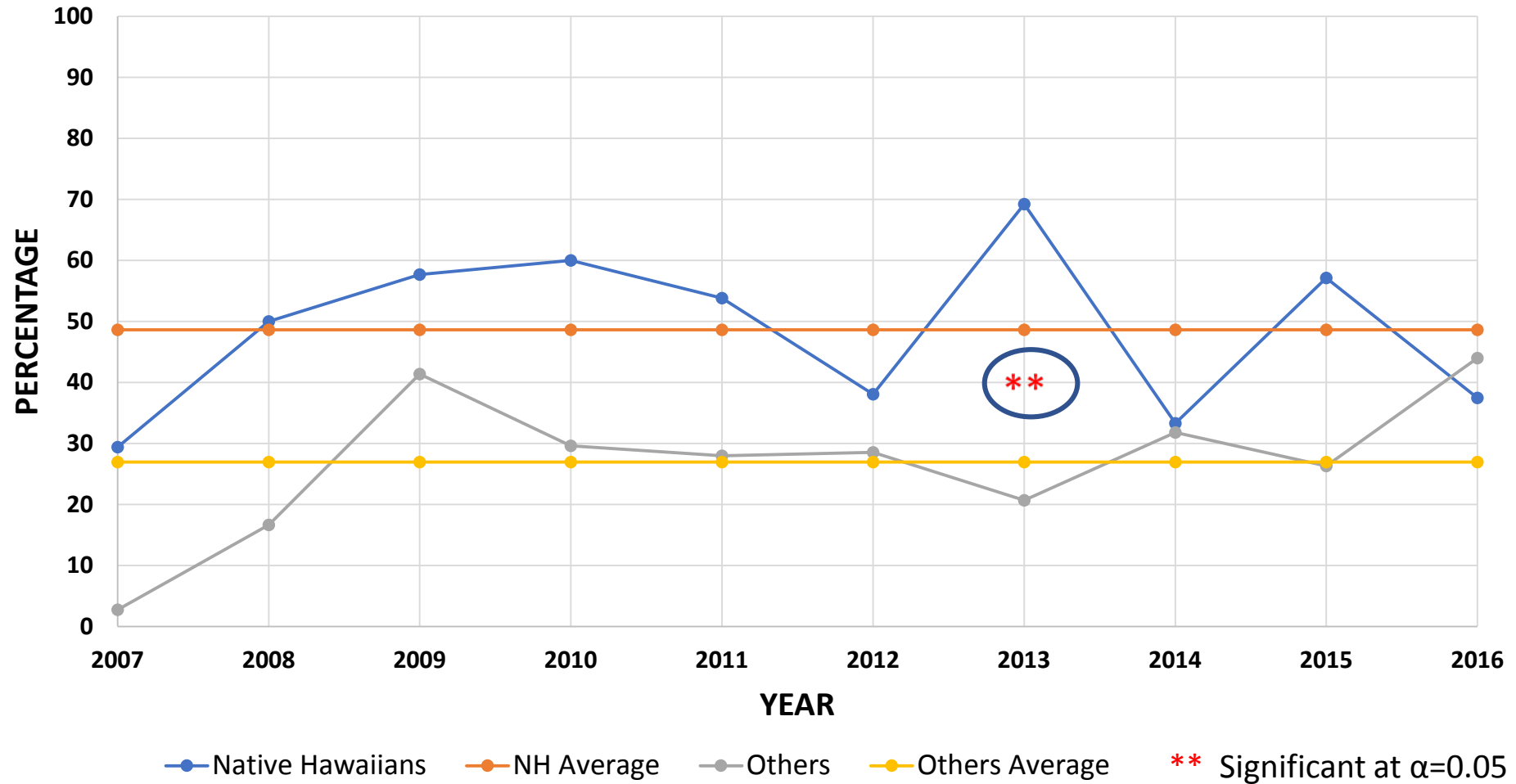


SPEEDING BY AGE GROUP

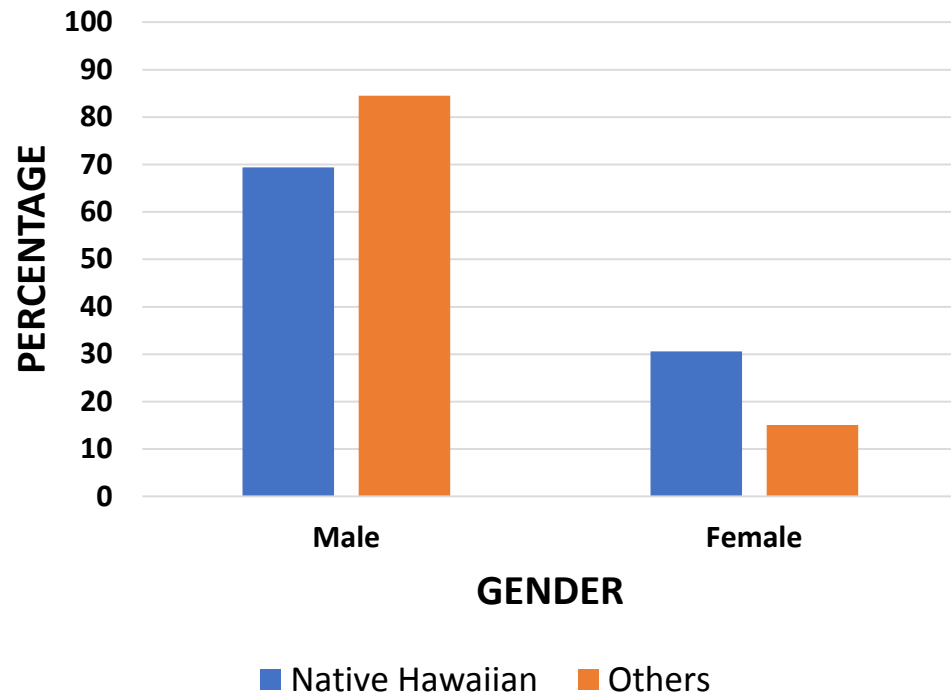


75% NH fatalities due to speeding in Hawaii are below the age of 35 and **50%** below 25

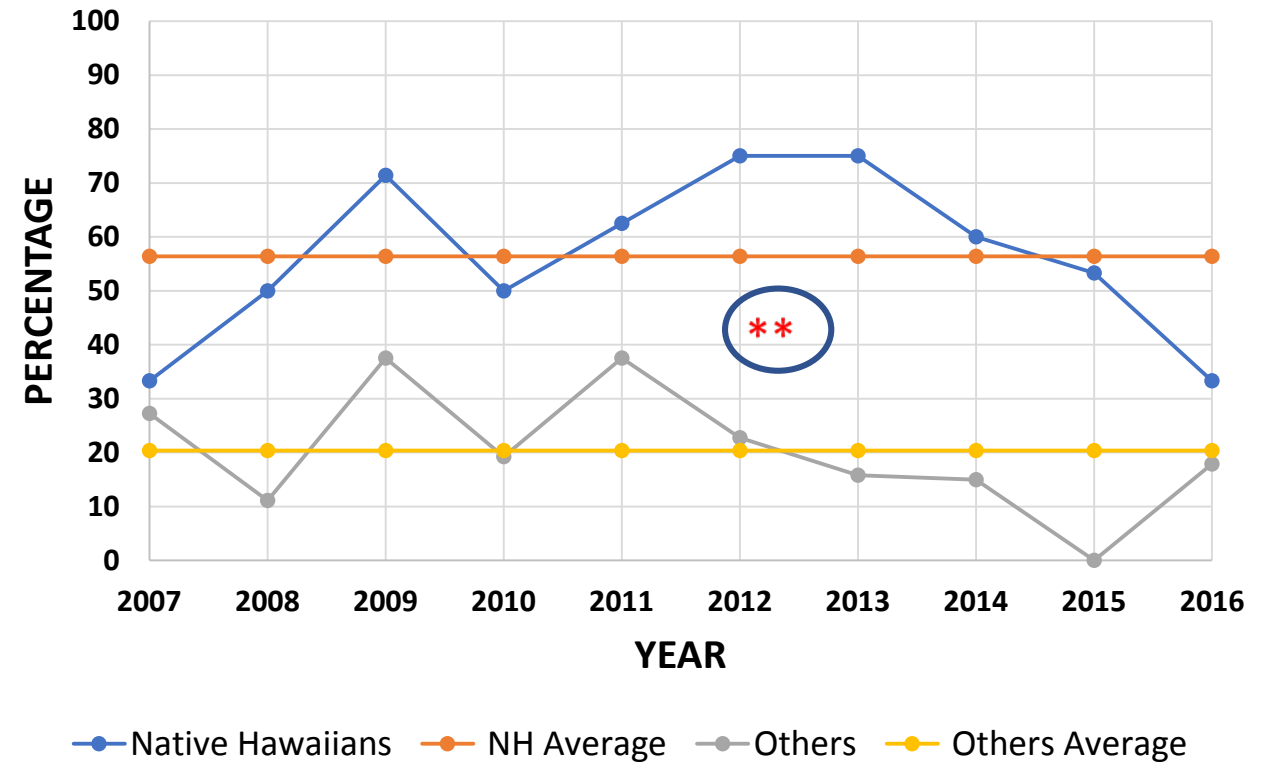
FATALITIES DUE TO SPEEDING YOUNGER THAN 25 YEARS OF AGE (%)



FATALITIES DUE TO SPEEDING BY GENDER (%)



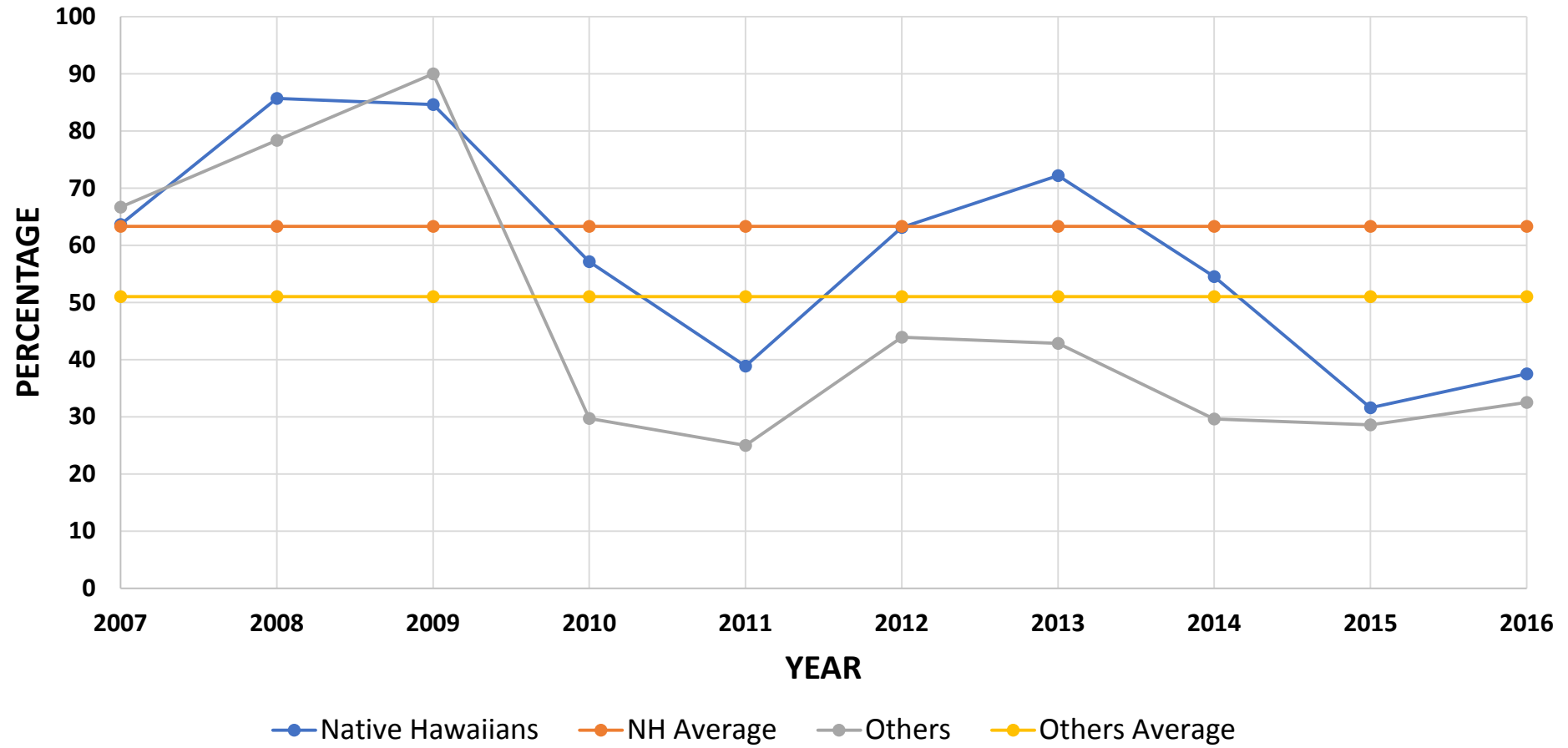
FEMALE FATALITIES DUE TO SPEEDING (%)



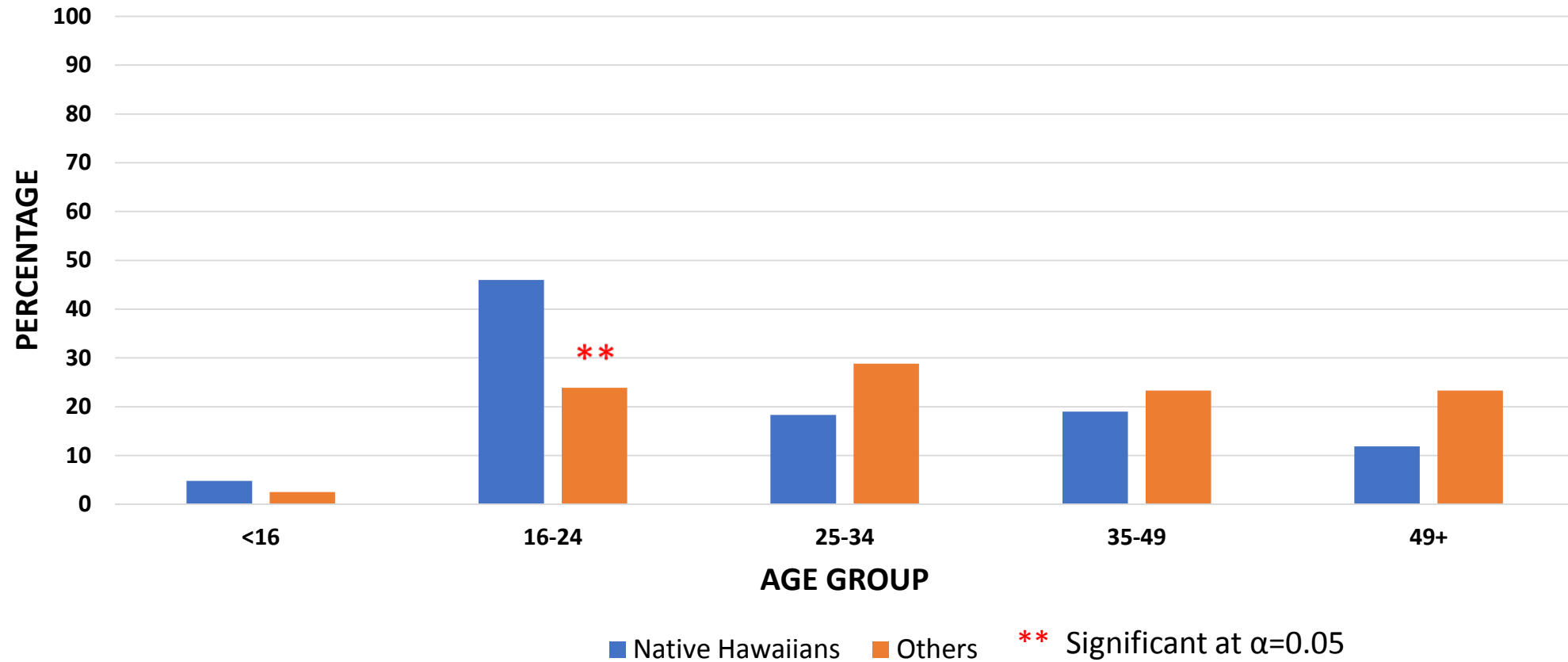
** Significant at $\alpha=0.05$

FATALITY ANALYSIS DUE TO NON-USAGE OF RESTRAINT

NON-USAGE OF RESTRAINT (%)

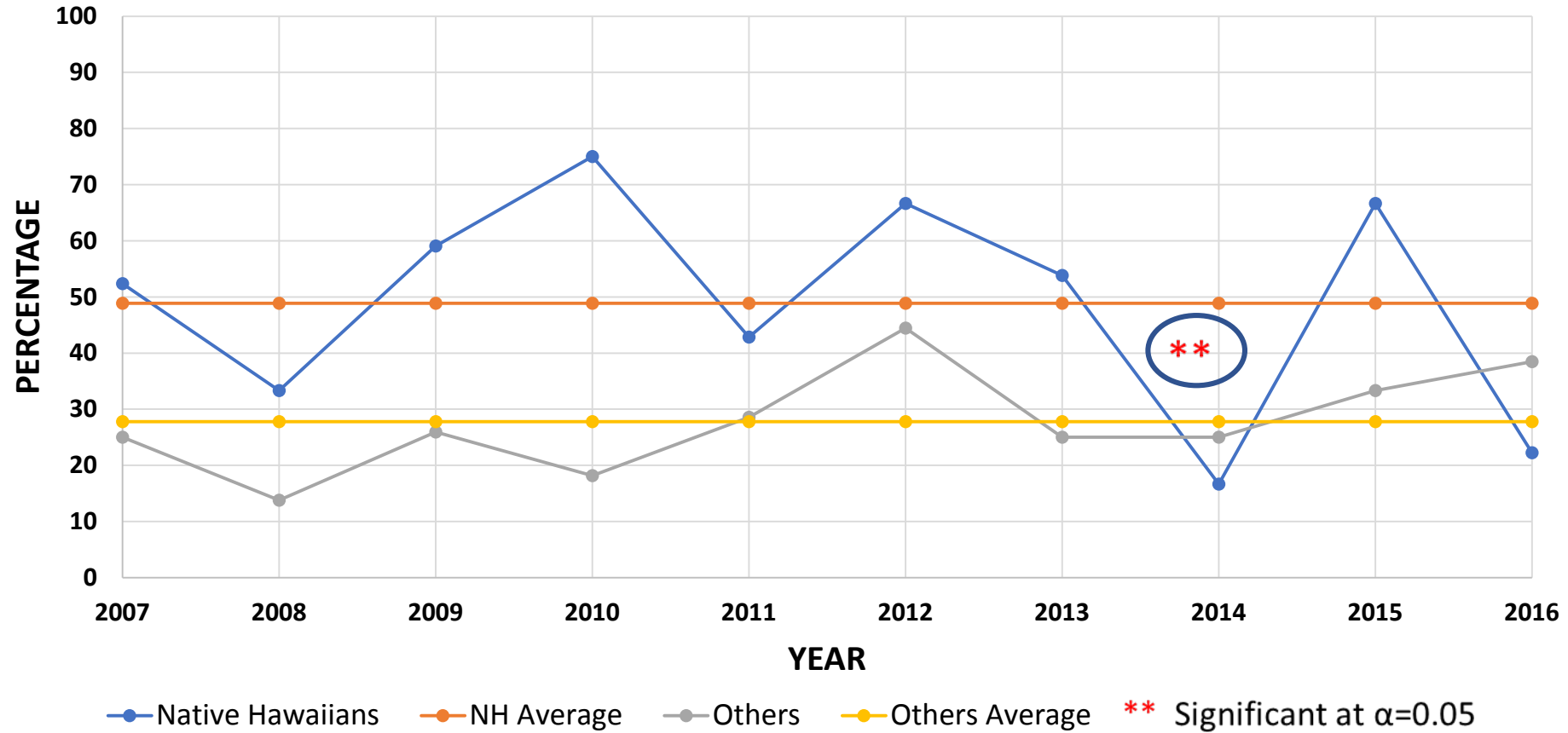


NON-USAGE OF RESTRAINT BY AGE GROUP (%)



50% fatalities due to non-usage of restraint are below the age of 25 in NH whereas its only **25%** in other races

FATALITIES DUE TO NON-USAGE OF RESTRAINT YOUNGER THAN 25 YEARS OF AGE (%)



MAJOR FINDINGS

- In Hawaii, almost **60%** of the NH fatalities are younger than 35 years of age and **40%** are younger than 25 years of age.
- Among the alcohol impaired fatalities in Hawaii, **69%** NH are younger than 35 and **46%** younger than 25
- **75%** NH fatalities due to speeding in Hawaii are below the age of 35 and **50%** below 25.
- **50%** fatalities due to non-usage of restraint are below the age of 25 in NH community whereas its only **25%** in other races.
- Female fatalities due to alcohol abuse and speeding is significantly higher in NH community than all other races.
- Fatalities of age group 50 and above is only **20%** in NH whereas it is almost **43%** in other races.

RECOMMENDATIONS

- Educational programs targeted for Native Hawaiian youths .
- Collaboration with Native Hawaiian leaders.
- Special traffic safety programs targeted for Native Hawaiians.



MAHALO!